

TBR...S 2A + 1000L 轴径 Shaft Diameter

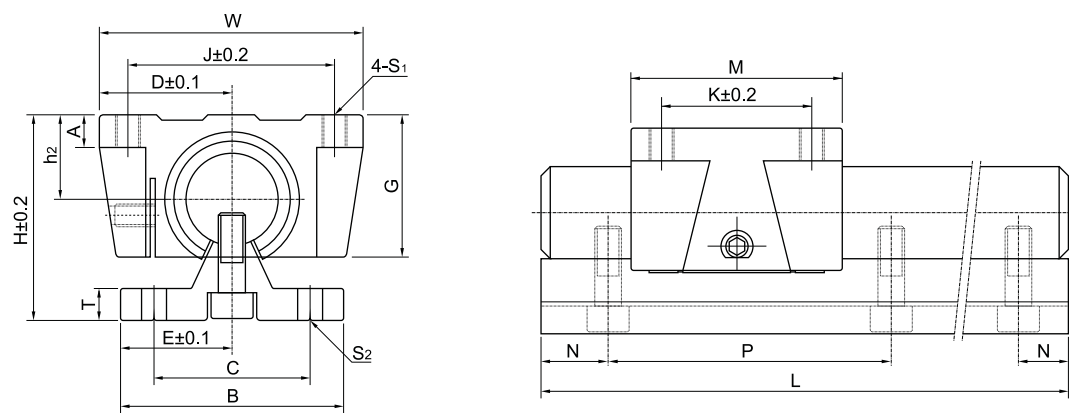
TBR 支撑导轨单元
TBR Support Rail Units

每条导轨上箱式单元数量
Number of the Units On One Support Rail Units

支撑轨长度* Rail Length

*指支撑轨与轴组合件长度，标准值及主要尺寸见TBS系列表。用户订货时需要提供图纸。
The main length of rails and slide units can be searched on the form of TBS series.

**箱式单元型号 Units Designation

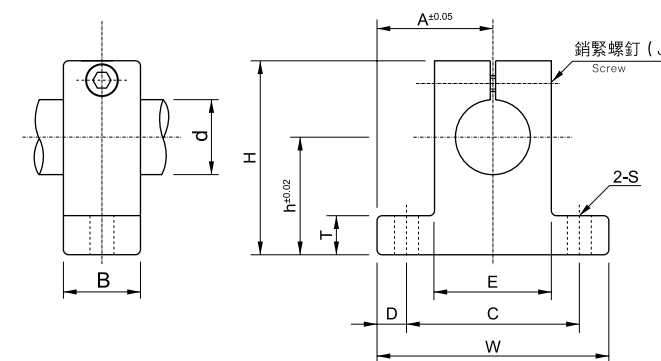


轴支座 Shaft Support

SH ...

MYT轴支座 Shaft Support

轴径 Shaft Diameter



SH (SK)

型号 Model		轴径 Shaft diameter	额定负荷 Basic load rating		重量 Weight (g)		尺寸 Dimensions (mm)			
支撑导轨单元 Rail units	箱式单元** Slide units		动负荷 Dynamic C N	静负荷 Static Co N	箱式单元 Slide units (g)	导轨 Rails (g/m)	D	h ₂	H	E
TBR16SA	TBR16UU	16	392	490	180	2,450	31	18	40	25
TBR20SA	TBR20UU	20	784	1,176	300	3,600	34	21	50	27.5
TBR25SA	TBR25UU	25	1,568	2,352	600	5,600	41	28	60	32.5
TBR30SA	TBR30UU	30	1,764	2,940	900	8,000	45.5	33.5	70	37.5

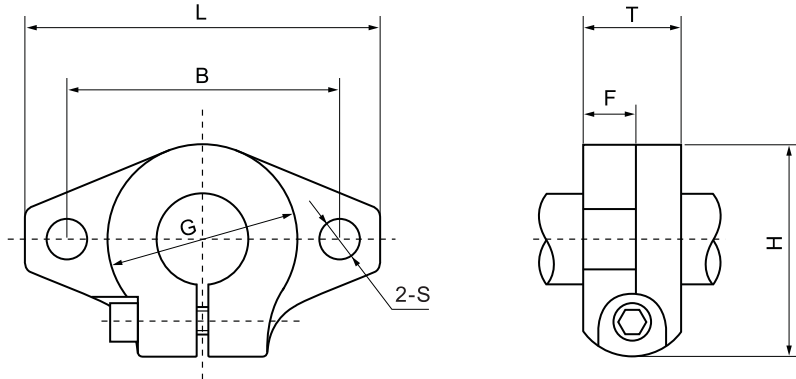
型号 Model	尺寸 Dimensions (mm)												
	W	G	A	B	T	M	S ₁	J	K	S ₂	C	N	P
TBR16SA	62	26	8	50	6	42	M5	50	30	φ5.5	37	20	150
TBR20SA	68	31	10	55	8	51	M6	54	37	φ5.5	40	20	150
TBR25SA	82	41	12	65	10	65	M8	65	50	φ6.6	45	25	200
TBR30SA	91	48	12	75	12	75	M8	75	60	φ6.6	55	25	200

型号 Model	轴径 Shaft diameter	额定负荷 Basic load rating		尺寸 Dimensions (mm)									配合直线轴承 Liner bearing		
		动负荷 Dynamic C N	静负荷 Static Co N	W	G	A	M	S ₁	J	K	E	h ₂	型号 Model	额定负荷 Basic load rating	
														动负荷 Dynamic C N	静负荷 Static Co N
TBR16LUU	16	780	980	62	26	8	85	M5	50	60	31	18	2xLM16UUOP	392	490
TBR20LUU	20	1,568	2,352	68	31	10	96	M6	54	70	34	21	2xLM20UUOP	784	1,176
TBR25LUU	25	3,136	4,704	82	41	12	130	M8	65	100	41	28	2xLM25UUOP	1,568	2,352
TBR30LUU	30	3,528	5,880	91	48	12	140	M8	75	110	45.5	33.5	2xLM30UUOP	1,764	2,940

型号 Model	轴径 Shaft diameter	尺寸 Dimensions (mm)											重量 Weight (g)
		h	A	W	H	T	E	D	C	B	S	J	
SH6	φ6	20	21	42	32.8	6	18	5	32	14	φ5.5	M4	24
SH8	φ8	20	21	42	32.8	6	18	5	32	14	φ5.5	M4	24
SH10	φ10	20	21	42	32.8	6	18	5	32	14	φ5.5	M4	24
SH12	φ12	23	21	42	37.5	6	20	5	32	14	φ5.5	M4	30
SH13	φ13	23	21	42	37.5	6	20	5	32	14	φ5.5	M4	30
SH16	φ16	27	24	48	44	8	25	5	38	16	φ5.5	M4	40
SH20	φ20	31	30	60	51	10	30	7.5	45	20	φ6.6	M5	70
SH25	φ25	35	35	70	60	12	38	7	56	24	φ6.6	M6	130
SH30	φ30	42	42	84	70	12	44	10	64	28	φ9	M6	180
SH35	φ35	50	49	98	82	15	50	12	74	32	φ11	M8	270
SH40	φ40	60	57	114	96	15	60	12	90	36	φ11	M8	420
SH50	φ50	70	63	126	120	18	74	13	100	40	φ14	M12	750
SH60	φ60	80	74	148	136	18	90	14	120	45	φ14	M12	1,100



SHF

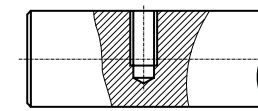


轴 Shafts

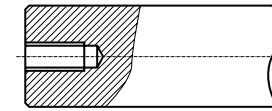


型号 Model	轴径 Shaft diameter	尺寸 Dimensions (mm)							安装螺栓型号 Mounting bolt designation	夹紧螺栓型号 Clamping bolt designation	重量 Weight (g)
		L	T	F	B	G	H	S			
SHF3	φ3	43	10	5	32	20	24	5.5	M5	M4	13
SHF4	φ4	43	10	5	32	20	24	5.5	M5	M4	13
SHF5	φ5	43	10	5	32	20	24	5.5	M5	M4	13
SHF6	φ6	43	10	5	32	20	24	5.5	M5	M4	13
SHF8	φ8	43	10	5	32	20	24	5.5	M5	M4	13
SHF10	φ10	43	10	5	32	20	24	5.5	M5	M4	13
SHF12	φ12	47	13	7	36	25	28	5.5	M5	M4	20
SHF13	φ13	47	13	7	36	25	28	5.5	M5	M4	20
SHF16	φ16	50	16	8	40	28	31	5.5	M5	M4	27
SHF20	φ20	60	20	8	48	34	37	7	M6	M5	40
SHF25	φ25	70	25	10	56	40	42	7	M6	M5	60
SHF30	φ30	80	30	12	64	46	50	9	M8	M6	110
SHF35	φ35	92	35	14	72	50	58	12	M10	M8	380
SHF40	φ40	102	40	16	80	56	67	12	M10	M10	510
SHF50	φ50	122	50	19	96	70	83	14	M12	M12	890
SHF60	φ60	140	60	23	112	82	95	14	M12	M12	1,500

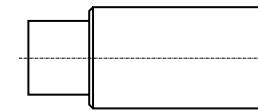
径向螺纹孔
Radial Holes Drolled and Tapped



轴向螺纹孔
Coaxial Holes Drolled and Tapped



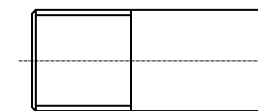
阶梯轴
Reduced Shaft Diameter



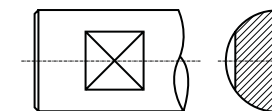
切槽
Snap Ring Grooves



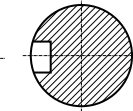
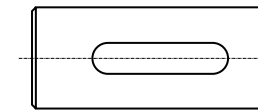
螺纹
Thread



平面
Flats



键槽
Key way



SNB直线轴是经热处理、磨削和抛光的高精度的产品。为直线轴承配套的直线轴，其直线性、粗糙度、圆柱度、表面质量和硬度是极其重要的。SNB直线轴在制造时围绕以上几点使其在任何工作条件下都能良好的工作。这些直线轴能支撑旋转运动、直线运动和旋转直线复合运动以及单纯的直线运动。

SNB slide shaft is hardened, ground and polished and features high precision quality. Straightness, roughness, cylindricity, surface finish and hardness are very important when used with linear motion slide bearings. SNB slide shafts are manufactured with these points in mind to maintain precision performance under any operating conditions. These slide shafts will satisfactorily support rotary, linear, linear-rotary complex, as well as simple linear motion applications.

材质 Material: GCr15高碳铬钢 High carbon chromium steel
 硬度 Hardness: HRc 62 ± 2°
 表面硬化厚度 Effective Hardening Depth: 0.8~2.5mm
 表面粗糙度 Roughness: Ra0.8
 直线度 Straightness: 50µm /300mm

图(Fig) 直线轴举例
Examples for Shafts