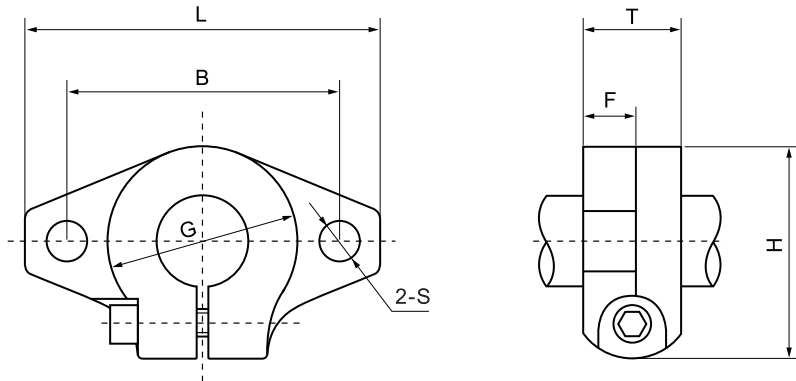


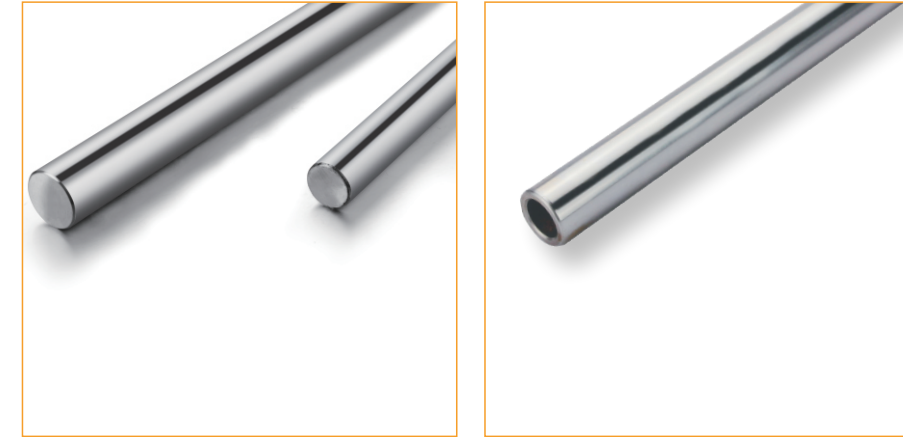


SHF

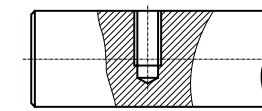


型号 Model	轴径 Shaft diameter	尺寸 Dimensions (mm)							安装螺栓型号 Mounting bolt designation	夹紧螺栓型号 Clamping bolt designation	重量 Weight (g)
		L	T	F	B	G	H	S			
SHF3	φ3	43	10	5	32	20	24	5.5	M5	M4	13
SHF4	φ4	43	10	5	32	20	24	5.5	M5	M4	13
SHF5	φ5	43	10	5	32	20	24	5.5	M5	M4	13
SHF6	φ6	43	10	5	32	20	24	5.5	M5	M4	13
SHF8	φ8	43	10	5	32	20	24	5.5	M5	M4	13
SHF10	φ10	43	10	5	32	20	24	5.5	M5	M4	13
SHF12	φ12	47	13	7	36	25	28	5.5	M5	M4	20
SHF13	φ13	47	13	7	36	25	28	5.5	M5	M4	20
SHF16	φ16	50	16	8	40	28	31	5.5	M5	M4	27
SHF20	φ20	60	20	8	48	34	37	7	M6	M5	40
SHF25	φ25	70	25	10	56	40	42	7	M6	M5	60
SHF30	φ30	80	30	12	64	46	50	9	M8	M6	110
SHF35	φ35	92	35	14	72	50	58	12	M10	M8	380
SHF40	φ40	102	40	16	80	56	67	12	M10	M10	510
SHF50	φ50	122	50	19	96	70	83	14	M12	M12	890
SHF60	φ60	140	60	23	112	82	95	14	M12	M12	1,500

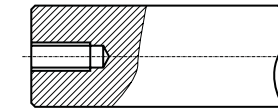
轴 Shafts



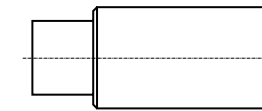
径向螺纹孔
Radial Holes Drolled and Tapped



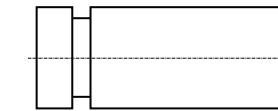
轴向螺纹孔
Coaxial Holes Drolled and Tapped



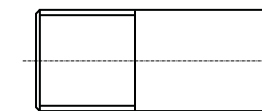
阶梯轴
Reduced Shaft Diameter



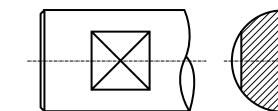
切槽
Snap Ring Grooves



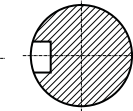
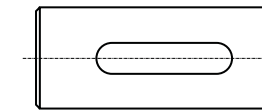
螺纹
Thread



平面
Flats



键槽
Key way



SNB直线轴是经热处理、磨削和抛光的高精度的产品。为直线轴承配套的直线轴，其直线性、粗糙度、圆柱度、表面质量和硬度是极其重要的。SNB直线轴在制造时围绕以上几点使其在任何工作条件下都能良好的工作。这些直线轴能支撑旋转运动、直线运动和旋转直线复合运动以及单纯的直线运动。

SNB slide shaft is hardened, ground and polished and features high precision quality. Straightness, roughness, cylindricity, surface finish and hardness are very important when used with linear motion slide bearings. SNB slide shafts are manufactured with these points in mind to maintain precision performance under any operating conditions. These slide shafts will satisfactorily support rotary, linear, linear-rotary complex, as well as simple linear motion applications.

材质 Material: GCr15高碳铬钢 High carbon chromium steel

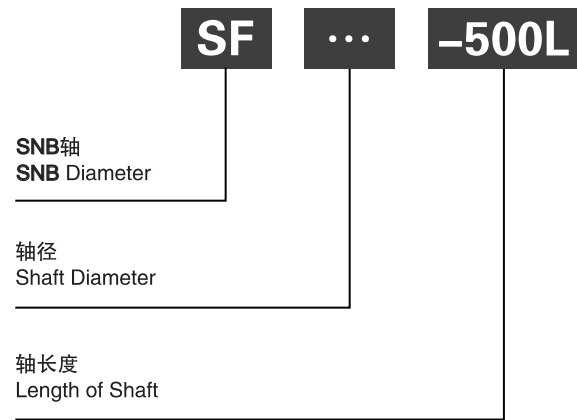
硬度 Hardness: HRc 62 ± 2°

表面硬化厚度 Effective Hardening Depth: 0.8~2.5mm

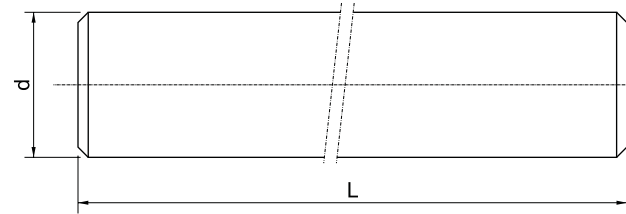
表面粗糙度 Roughness: Ra0.8

直线度 Straightness: 50μm /300mm

图(Fig) 直线轴举例
Examples for Shafts



SF	直线轴 LINEAR SHAFT
SFC	电镀直线轴 HARD CHROMIC PLATING SHAFT
SSF	不锈钢直线轴 9Cr18 SHAFT
PSF	空心轴 LM PIPE SHAFT



型号 Model	轴径 Shaft diameter (g6)		尺寸 Dimensions (mm)												
	d (mm)	公差 Tolerance (μ m)	100	200	300	400	500	600	700	800	1000	1200	1300	1500	2000
SF3	ϕ 3	$\begin{matrix} -0.002 \\ -0.008 \end{matrix}$	○	○	⊙	-	-	-	-	-	-	-	-	-	-
SF4	ϕ 4	-0.004	○	○	⊙	⊙	-	-	-	-	-	-	-	-	-
SF5	ϕ 5	-0.012	○	○	○	⊙	-	-	-	-	-	-	-	-	-
SF6	ϕ 6	-0.005	○	○	○	○	⊙	-	-	-	-	-	-	-	-
SF8	ϕ 8	-0.014	○	○	○	○	○	⊙	-	-	-	-	-	-	-
SF10	ϕ 10	-0.006	○	○	○	○	○	○	○	⊙	⊙	○	○	-	-
SF12	ϕ 12	-0.017	-	○	○	○	○	○	○	○	⊙	⊙	○	○	-
SF13	ϕ 13	-0.017	-	○	○	○	○	○	○	○	○	⊙	⊙	○	-
SF16	ϕ 16	-0.007	-	○	○	○	○	○	○	○	○	○	○	○	-
SF20	ϕ 20	-0.020	-	○	○	○	○	○	○	○	○	○	○	○	⊙
SF25	ϕ 25	-0.009	-	○	○	○	○	○	○	○	○	○	○	○	⊙
SF30	ϕ 30	-0.025	-	-	○	○	○	○	○	○	○	○	○	○	⊙
SF35	ϕ 35	-0.010	-	-	-	-	○	○	○	○	○	○	○	○	⊙
SF40	ϕ 40	-0.029	-	-	-	-	○	○	○	○	○	○	○	○	⊙
SF50	ϕ 50	-0.010	-	-	-	-	○	○	○	○	○	○	○	○	⊙
SF60	ϕ 60	-0.034	-	-	-	-	-	-	-	-	○	○	○	○	⊙
SF80	ϕ 80	-0.012	-	-	-	-	-	-	-	-	○	○	○	○	⊙
SF100	ϕ 100	$\begin{matrix} -0.012 \\ -0.034 \end{matrix}$	-	-	-	-	-	-	-	-	○	○	○	○	⊙

○ 标准库存品 Standard Length
 ⊙ 标准准库存品 The Length to order

直线轴承代号对照表 Linear Bearing Code Table

亚洲公制 (Used in Asia)

轴承代号 Bearing code	生产公司 Manufacturer						
	中国 (CHINA)			日本 (JAPAN)			南韩 (SOUTH KOREA)
LM	MYT	太敬	IBI (台湾)	THK	HEPHAIST	IKO	SAMICK
SM				NACHI	NB		意大利 (ITALY)
LB				NSK			
SDM				EASE			
KLM				NTN			

欧洲公制 (Used in Europe)

轴承代号 Bearing code	中国 (CHINA)			日本 (JAPAN)			南韩 (SOUTH KOREA)
	MYT	太敬		THK	HEPHAIST	IKO	SAMICK
LME							意大利 (ITALY)
KB	德国 (GERMANY)			NACHI		NB	
	INA						
SDM				EASE			

美洲公制 (Used in US)

轴承代号 Bearing code	中国 (CHINA)			日本 (JAPAN)			南韩 (SOUTH KOREA)
	MYT	太敬		THK	HEPHAIST	IKO	SAMICK
LMB							意大利 (ITALY)
SW				NACHI		NB	
SDB				EASE			

公制系列: 国际标准 (ISO10285) 及中国标准 (GB/T16940)
 基本代号: LB

轴和孔的配合公差 (公制) Fitting Tolerances for Shafts and Bore Diameters (Metric Dimension Series)

公称轴径 Nominal diameter mm		轴径公差 Shaft Diameter Tolerance μm															支撑孔径公差 Tolerance for Housing Bore Diameter μm																
		f			g			h			js			j			k			H			J			K			M				
Over	Incl	f5	f6	f7	g5	g6	g7	h5	h6	h7	h8	js5	js6	js7	j5	j6	j7	k5	k6	k7	h5	h6	h7	h8	J6	J7	J8	K6	K7	K8	M6	M7	M8
-	3	-10	-12	-16	-6	-8	-12	-4	-6	-10	-14	± 2	± 3	± 5	+2	+4	+6	+4	+8	+10	+4	+6	+10	+14	+2	+4	+6	0	0	0	-2	-2	-2
3	6	-15	-18	-22	-4	-12	-16	-5	-8	-12	-18	± 2.5	± 4	± 5	+3	+6	+8	+6	+9	+13	+5	+8	+12	+18	+5	+6	+10	+2	+3	+5	-1	0	+2
6	10	-19	-22	-28	-5	-14	-20	-6	-9	-15	-22	± 3	± 4.5	± 7	+4	+7	+10	+7	+10	+16	+9	+9	+15	+22	+5	+8	+12	+2	+5	+6	-3	0	+1
10	14	-24	-27	-34	-6	-17	-24	-8	-11	-18	-27	± 4	± 5.5	± 9	+5	+8	+12	+9	+12	+19	+8	+11	+18	+27	+6	+10	+15	+2	+6	+8	-4	0	-2
14	18	-29	-33	-41	-7	-20	-28	-9	-13	-21	-33	± 4.5	± 6.5	± 10	+5	+9	+13	+11	+15	+23	+9	+13	+21	+33	+8	+12	+20	+2	+6	+10	-4	0	+4
18	24	-36	-41	-50	-9	-25	-34	-11	-16	-25	-39	± 5.5	± 8	± 12	+6	+11	+15	+13	+18	+27	+11	+16	+25	+39	+10	+14	+24	+3	+7	+12	-4	0	+5
24	30	-43	-49	-60	-10	-29	-40	-13	-19	-30	-46	± 6.5	± 9.5	± 15	+6	+12	+18	+15	+21	+32	+13	+19	+30	+46	+13	+18	+28	+4	+9	+14	-5	0	+5
30	40	-51	-58	-71	-12	-34	-47	-15	-22	-35	-54	± 7.5	± 11	± 17	+6	+13	+20	+18	+25	+38	+15	+22	+35	+54	+16	+22	+34	+4	+10	+16	-6	0	+6
40	50	-61	-68	-83	-14	-39	-54	-18	-25	-40	-63	± 9	± 12.5	± 20	+7	+14	+22	+21	+28	+43	+18	+25	+40	+63	+18	+26	+41	+4	+12	+20	-8	0	+8
50	65	-68	-76	-93	-16	-43	-60	-21	-29	-46	-73	± 10	± 14	± 22	+7	+15	+24	+23	+31	+48	+20	+28	+46	+75	+20	+29	+46	+5	+14	+24	-10	0	+10
65	80	-76	-85	-104	-18	-49	-68	-23	-32	-51	-81	± 11	± 16	± 25	+7	+16	+26	+25	+34	+53	+22	+31	+51	+83	+22	+32	+51	+6	+16	+27	-11	0	+11
80	100	-83	-93	-114	-20	-56	-77	-25	-35	-56	-89	± 12.5	± 18	± 28	+8	+18	+29	+27	+37	+58	+25	+35	+57	+93	+24	+35	+55	+7	+18	+29	-12	0	+12
100	120	-91	-102	-125	-22	-64	-87	-27	-38	-60	-97	± 14	± 20	± 30	+8	+19	+31	+29	+40	+63	+27	+38	+61	+100	+26	+38	+59	+8	+20	+32	-13	0	+13
120	140	-100	-112	-137	-24	-72	-97	-29	-41	-64	-105	± 16	± 22.5	± 34	+9	+21	+34	+31	+43	+68	+30	+42	+66	+110	+28	+41	+63	+9	+22	+35	-14	0	+14
140	160	-110	-123	-150	-26	-81	-109	-31	-44	-68	-111	± 18	± 25	± 38	+10	+23	+37	+33	+46	+73	+33	+46	+71	+120	+30	+44	+68	+10	+24	+38	-15	0	+15
160	180	-120	-134	-163	-28	-88	-119	-33	-47	-72	-117	± 20	± 28	± 42	+11	+25	+40	+35	+49	+78	+36	+51	+77	+130	+32	+47	+73	+11	+26	+41	-16	0	+16

轴和孔的配合公差 (英制) Fitting Tolerances for Shafts and Bore Diameters

孔公差 Tolerance for Bore

区分 Division	直径 Diameter		H5		H6		H7		H8	
	inch	mm	inch	mm	inch	mm	inch	mm	inch	mm
以上	0.1181	3	+0.0002	+0.005	+0.0003	+0.008	+0.0005	+0.012	+0.0007	+0.018
以下	0.2362	6	0	0	0	0	0	0	0	0
以上	0.2362	6	+0.0002	+0.006	+0.0003	+0.009	+0.0006	+0.015	+0.0008	+0.022
以下	0.3937	10	0	0	0	0	0	0	0	0
以上	0.3937	10	+0.0003	+0.008	+0.0004	+0.011	+0.0007	+0.018	+0.0010	+0.027
以下	0.7087	18	0	0	0	0	0	0	0	0
以上	0.7087	18	+0.0003	+0.009	+0.0005	+0.013	+0.0008	+0.021	+0.0013	+0.033
以下	1.1811	30	0	0	0	0	0	0	0	0
以上	1.1811	30	+0.0004	+0.011	+0.0006	+0.016	+0.0009	+0.025	+0.0015	+0.039
以下	1.9685	50	0	0	0	0	0	0	0	0
以上	1.9685	50	+0.0005	+0.013	+0.0007	+0.019	+0.0011	+0.030	+0.0018	+0.046
以下	3.1496	80	0	0	0	0	0	0	0	0
以上	3.1496	80	+0.0005	+0.015	+0.0008	+0.022	+0.0013	+0.035	+0.0021	+0.054
以下	4.7244	120	0	0	0	0	0	0	0	0

轴公差 Tolerance for shaft

区分 Division	直径 Diameter		g5		g6		g7		h5		h6		h7	
	inch	mm	inch	mm	inch	mm	inch	mm	inch	mm	inch	mm	inch	mm
以上	0.1181	3	-0.0001	-0.004	-0.0001	-0.004	-0.0001	-0.004	0	0	0	0	0	0
以下	0.2362	6	-0.0003	-0.009	-0.0004	-0.012	-0.0006	-0.016	-0.0002	-0.005	-0.0003	-0.008	-0.0004	-0.012
以上	0.2362	6	-0.0002	-0.005	-0.0002	-0.005	-0.0002	-0.005	0	0	0	0	0	0
以下	0.3937	10	-0.0004	-0.011	-0.0005	-0.014	-0.0007	-0.020	-0.0002	-0.006	-0.0003	-0.009	-0.0006	-0.015
以上	0.3937	10	-0.0002	-0.006	-0.0002	-0.006	-0.0002	-0.006	0	0	0	0	0	0
以下	0.7087	18	-0.0005	-0.014	-0.0006	-0.017	-0.0009	-0.024	-0.0003	-0.008	-0.0004	-0.011	-0.0007	-0.018
以上	0.7087	18	-0.0002	-0.007	-0.0002	-0.007	-0.0002	-0.007	0	0	0	0	0	0
以下	1.1811	30	-0.0006	-0.016	-0.0007	-0.020	-0.0011	-0.028	-0.0003	-0.009	-0.0005	-0.013	-0.0008	-0.021
以上	1.1811	30	-0.0003	-0.009	-0.0003	-0.009	-0.0003	-0.009	0	0	0	0	0	0
以下	1.9685	50	-0.0007	-0.020	-0.0009	-0.025	-0.0013	-0.034	-0.0004	-0.011	-0.0006	-0.016	-0.0009	-0.025
以上	1.9685	50	-0.0004	-0.010	-0.0004	-0.010	-0.0004	-0.010	0	0	0	0	0	0
以下	3.1496	80	-0.0009	-0.023	-0.0011	-0.029	-0.0015	-0.040	-0.0005	-0.013	-0.0007	-0.019	-0.0011	-0.030
以上	3.1496	80	-0.0004	-0.012	-0.0004	-0.012	-0.0004	-0.012	0	0	0	0	0	0
以下	4.7244	120	-0.0010	-0.027	-0.0013	-0.034	-0.0018	-0.047	-0.0006	-0.015	-0.0008	-0.022	-0.0013	-0.035